

# Tackling climate change

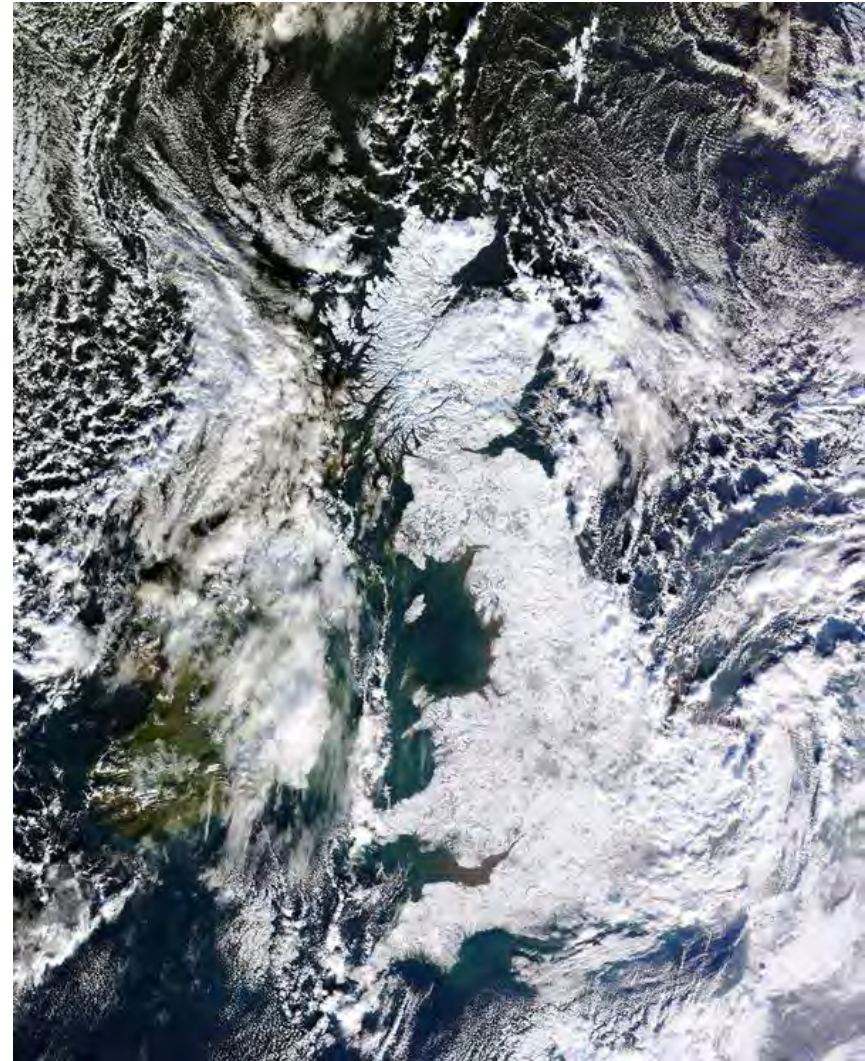
Cranborne Chase & West Wiltshire Downs AONB  
Wednesday 22 September 2010



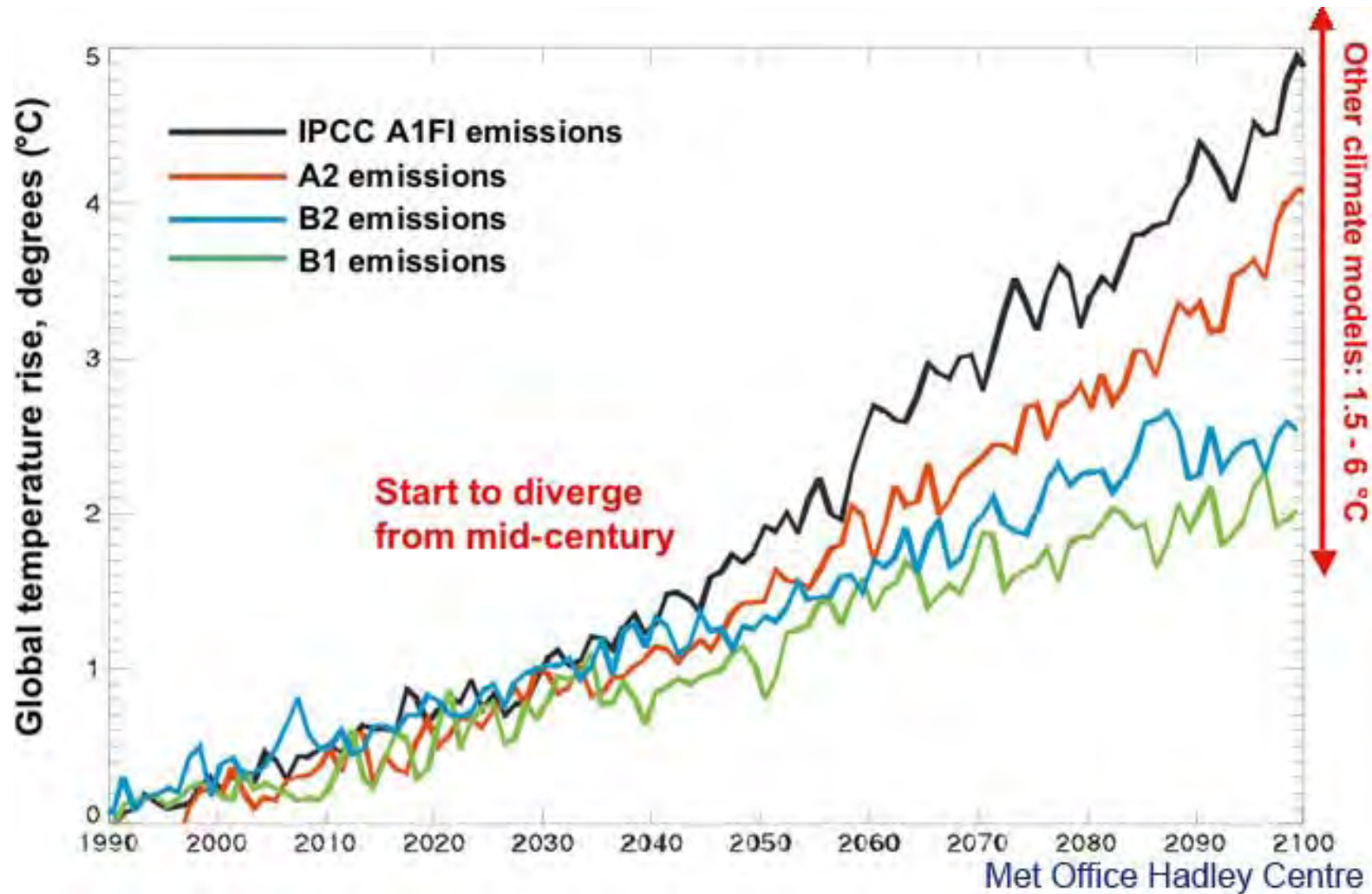
**Kate Hall**, Sustainable Development Manager  
Dorset County Council

# Climate change ?

- Average temperatures have increased by 1°C
- 9 out of 10 warmest years on record since 1990
- 2009 – UK 14<sup>th</sup> warmest, globally 5<sup>th</sup> warmest.



# Future warming





# Climate Change projections for SW

- **Hotter, drier summers**
- **Warmer, wetter winters**
- **More extreme events -**  
flash flooding, droughts,  
heat waves, storms
- **Sea level rise**



# Actual & predicted impacts

- **Wildlife**
  - New species
  - Loss of species
- **Highways**
  - Melting road surfaces
- **Coast**
  - Damage to coastal amenities & loss of beaches
- **Health**
  - Increase risk of heat stroke/stress
  - Less winter deaths



## Mitigation

- reducing carbon dioxide (CO<sub>2</sub>) & other greenhouse gas emissions

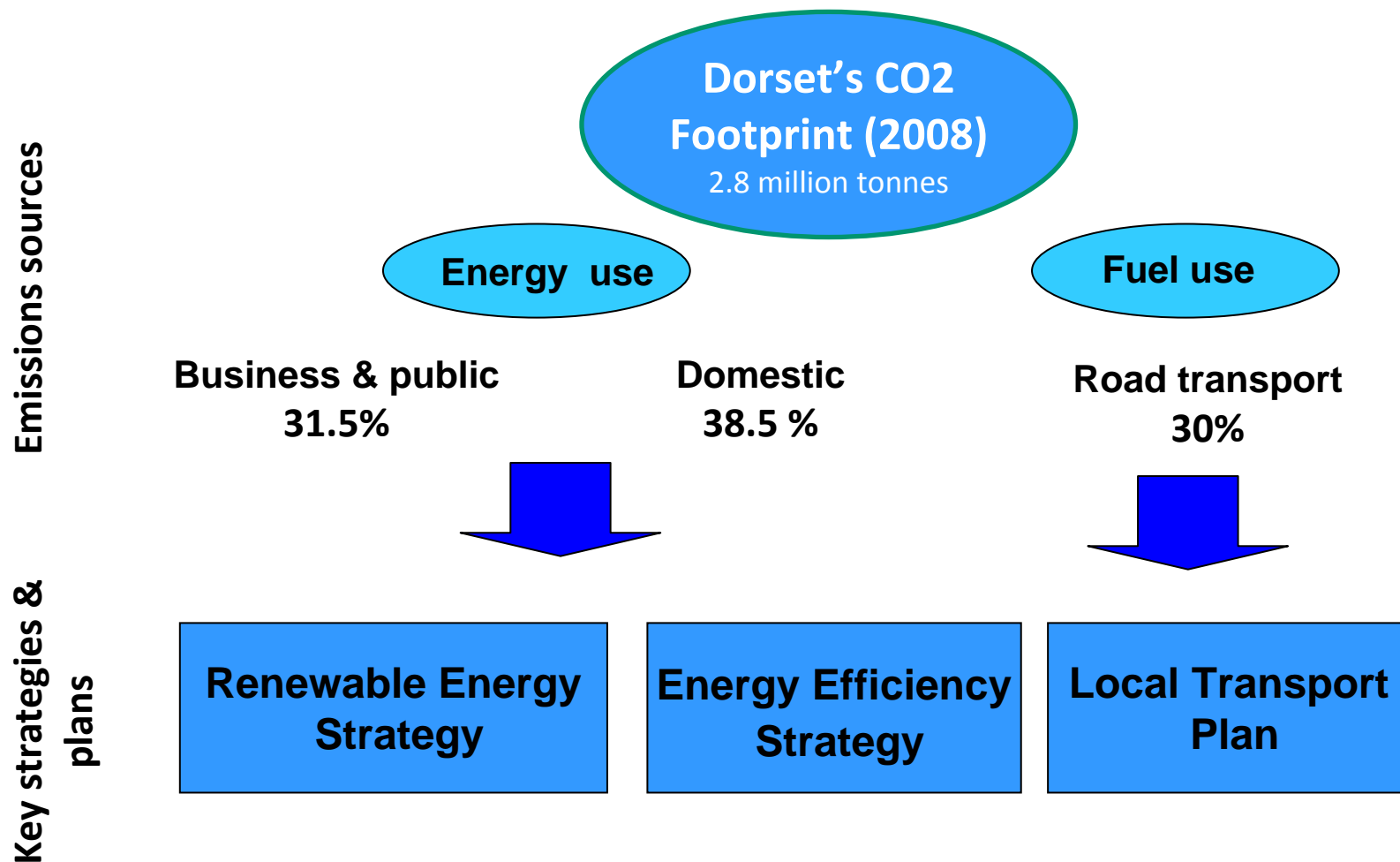


## Adaptation

- coping with the unavoidable impacts of climate change



# Climate change mitigation in Dorset





# Dorset Renewable Energy Strategy



Bournemouth, Dorset & Poole  
Renewable Energy Strategy  
& Action Plan

Final Version



Prepared by the Centre for Sustainable Energy for Dorset County Council and Dorset Energy Group  
December 2005

## Strategy published Dec 2005

- Heat & electricity
- **New strategy being developed**

## Five year action plan

- Planning
- Biomass energy
- RE in buildings
- Raising awareness
- Community renewables

## Dorset Energy Group

- Executive
- 6 working groups

## DCC

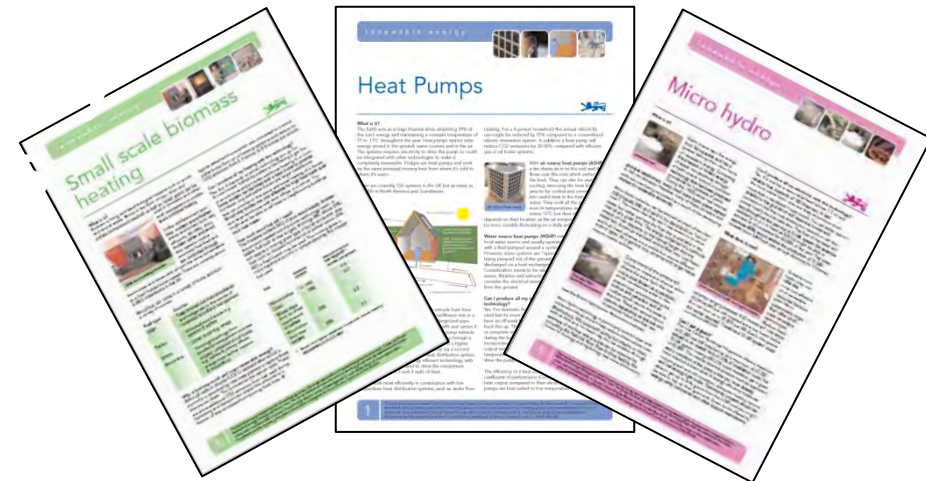
- RE Development Officer
- RE Technical Officer





# Progress to date – some examples

- Over 50 RE installations – schools, LA & community buildings
- 8 renewable information sheets
- Assessment of Dorset's wood fuel resource
- Training programme for planning officers & councillors
- Supporting community renewable energy groups



# Dorset Energy Efficiency Strategy



Bournemouth, Dorset and  
Poole Energy Efficiency  
Strategy and Action Plan

Final version



Prepared by the Centre for Sustainable Energy for Dorset  
County Council and the Dorset Energy Group. November 2009



## Final Strategy Oct 2009

- Energy efficiency
- Fuel poverty

## Targets

- 30 % reduction in CO<sub>2</sub> by 2020
- Seek to eliminate fuel poverty by 2016

## Five year action plan

- Business
- Domestic
- Public
- Community

## Dorset Energy Group

## DCC

- Energy Efficiency Development Officer



# Domestic & business – key issues



## Domestic

- **4 fold** increase in energy efficiency (EE) measures

## Current actions

- Energy advice provision
- Developing area based energy efficiency programmes e.g. street, village, town.



## Business

- **11 fold** increase in EE advice to business

## Current actions

- Business advice provision
- Local authority supply chains





# Resource Efficiency Advice



## **Improve Your Resource Efficiency (IYRE)**

Helps SMEs make resource efficiency improvements and boost profits.

Free consultancy from Business Link and grants for specialist consultancy, training and equipment.

## **South West Agricultural Resource Management Initiative Resource Efficiency for Farmers:**

Professional advice on energy, water, and waste.  
Grants for capital works.

Contact Business Link on **0845 600 9966** for details



## Low Carbon Travel Strategy (draft)

Aspiration target of reducing transport emissions by 30% by 2020

- Minimising need to travel
- Public sector leading by example
- Smarter choices
- Promoting walking & cycling
- Low carbon vehicles & technology



## ➤ Dorset Climate Change Adaptation Strategy

- Climate impacts and actions
- Dorset's economy, society & infrastructure and natural environment
- Involve all key stakeholders





# Progress to date – Dorset's local authorities

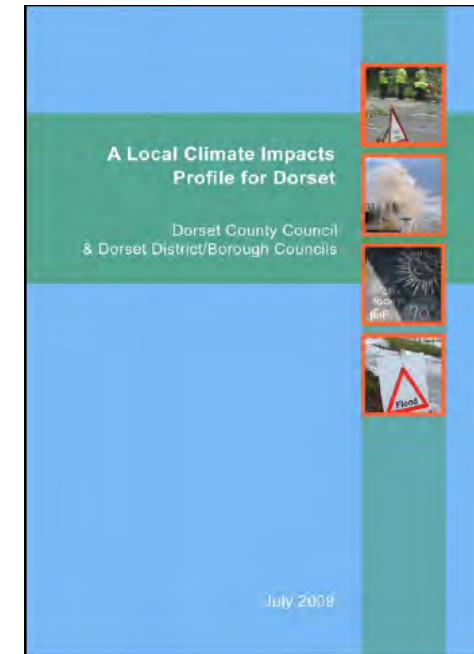


## Local Climate Impacts Profile for Dorset

- Initial assessment of current vulnerability of DCC & districts to extreme weather.
  - Highways network
  - Grounds maintenance
  - Significant costs

## Climate Change Risk Assessment

- Comprehensive assessment of future vulnerability of DCC & districts to climate change.
- Priority risks
  - Green infrastructure & the natural environment
  - Highways
  - Local authority buildings
  - Health
  - Local economy



**Any questions ?**



**[www.dorsetforyou.com/climatechange](http://www.dorsetforyou.com/climatechange)**