

PROGRAMME



Made possible with



Heritage Fund

CELEBRATE CHASE & CHALKE

24th July 2024

Larmer Tree Gardens, 10am – 8.30pm



CHASE &
CHALKE
LANDSCAPE
PARTNERSHIP



Cranborne
Chase
National
Landscape

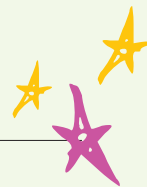


@chaseandchalke



@CranborneChase

Talks & Presentations – in the Pavilion



10.30am	Chase & Chalke, an introduction to the scheme and the day, with Robert Lloyd, Scheme Manager and the Chase & Chalke Team
10.45am	Ancient Ways & Walking, with Shirley Bragg, Roland Hughes and Rachel Limb
11.30am	Nurturing Nature, with Jon Isherwood
12.15pm	Champions of the Past – LIDAR, with Rebecca Bennett
1.00pm	Prehistory of Cranborne Chase, with Martin Green
2.00pm	Wonderful Woodlands, with Clive Whitbourn and Roland Hughes
2.45pm	Crystal Clear Ebble, with Alex Deacon and Matt Irvine
3.30pm	Starry, Starry Nights, the Importance of our Dark Skies, with Steve Tonkin



Performances



11.00am	Queen Matilda, a Characters of the Chase performance (Tented Pavilion on the lawn)
12.00pm	General Augustus Pitt Rivers, a Characters of the Chase performance (Tented Pavilion on the lawn)
1.00pm to 4.00pm	Music from Voices in the Landscape Project, played by La Folia (Lower Indian Room)
2.15pm	Mrs Ridout, a Characters of the Chase performance (Tented Pavilion on the lawn, or in the Racecourse Field Marquee)
4.00pm	General Augustus Pitt Rivers, a Characters of the Chase performance (Tented Pavilion on the lawn)
4.15pm	The Headless Horseman, an evocative poetry performance by Estelle Phillips (in the Pavilion)
4.30pm	Skittle Alley Strummers (The Singing Theatre)
5.00pm	Mrs Ridout, a Characters of the Chase performance (Tented Pavilion on the lawn)
5.30pm	Poetry performances and open mic session (Racecourse Field Marquee)
6.30pm	Skittle Alley Strummers (The Singing Theatre)

Walks and Activities

10.30am to 12.30pm	Space Detectives Activities , with Jo Richardson (Activity Marquee on the Field)
11.00am	Butterfly Walk in the Gardens , with Butterfly Conservation*
11.00am	Solar Observing , with Steve Tonkin (in the Racecourse Field)
11.45am	Art Workshop – walk in the Gardens and make a sketchbook, with Jo Beal*
12.00pm	Butterfly Walk in the Gardens , with Butterfly Conservation*
12.30pm	Solar Observing , with Steve Tonkin (in the Racecourse Field)
1.00pm	Butterfly Walk in the Gardens , with Butterfly Conservation*
1.30pm	Nature Connection and Wellbeing Walk in the Gardens, with Lindsey Death*
1.30pm to 3.30pm	Space Detectives Activities , with Jo Richardson (Activity Marquee on the Field)
2.00pm	Butterfly Walk in the Gardens , with Butterfly Conservation*
2.00pm	Solar Observing , with Steve Tonkin (in the Racecourse Field)
4.00pm	Art Workshop – walk in the Gardens and make a sketchbook, with Jo Beal*
4.00pm to 7.00pm	Space Detectives Activities , with Jo Richardson (Activity Marquee on the Field)
5.30pm	Solar Observing , with Steve Tonkin (in the Racecourse Field)
8.00pm	Dusk Bird Walk , with Tom Perrett*
9.00pm	Bat Walk , with Gareth Harris, Wiltshire Bat Group & Consultant Bat Ecologist*

* Spaces on these activities are limited, please register on the day at the information tent, first come first served.



Throughout the Day (unscheduled)

Silk Flags around the gardens created by Nicola Davis with local communities. Drop in to the Activity Marquee to help Nicola paint the final flag!

Exhibitions in the Pavilion: Work created in our three Artist Residencies and in the Words in the Landscape project and by resident poet, Akulah Agbami.

Voices in the Landscape: La Folia has worked with local choirs and communities to gather and create local folk songs and will be performing some of these during the afternoon (Lower Indian Room and strolling).

Large Scale Wild Art, with Forest School Leader Anthony Brown (in the Racecourse Field).

Peg Making, with Pete Jameson (in the Racecourse Field).

Historical music from the 16th - 17th Century performed on the Renaissance Lute, French Theorbo & Baroque Guitar with a brief history on the evolution of these instruments into the modern guitar we know today, with Leon Tadman. (Activity Marquee on the Racecourse Field and strolling).

And... keep an eye out for our **Characters of the Chase** around the gardens and on the Racecourse Field.

What did the Owl have for Dinner? Dissect an owl pellet and solve the mystery, with Martin Down Rangers, Theo and James (Activity Marquee on the Racecourse Field).

Discover life in Romano-Britain during Roman occupation, and how life changed for the inhabitants of this Island with a tented display and talks. Join Dave and Ruth Allan of Weymouth Heritage Centre Ltd and make mosaics, or a basic poultice (in the Racecourse Field).

Mudern Art – hands-on fun painting with earth pigments (Activity Marquee on the Racecourse Field).

Children's area – colouring, nature bingo (Activity Marquee on the Racecourse Field).

Food Outlets

Dorset Pizza Kitchen

Dorset Lamb

Joanna's Gelatos

The Coffee Lodge
at the Larmer Tree Gardens



**Thank you to all our wonderful
partners and volunteers.**



 @chaseandchalke

 @CranborneChase

cranbornechase.org.uk

Made possible with
 **Heritage
Fund**