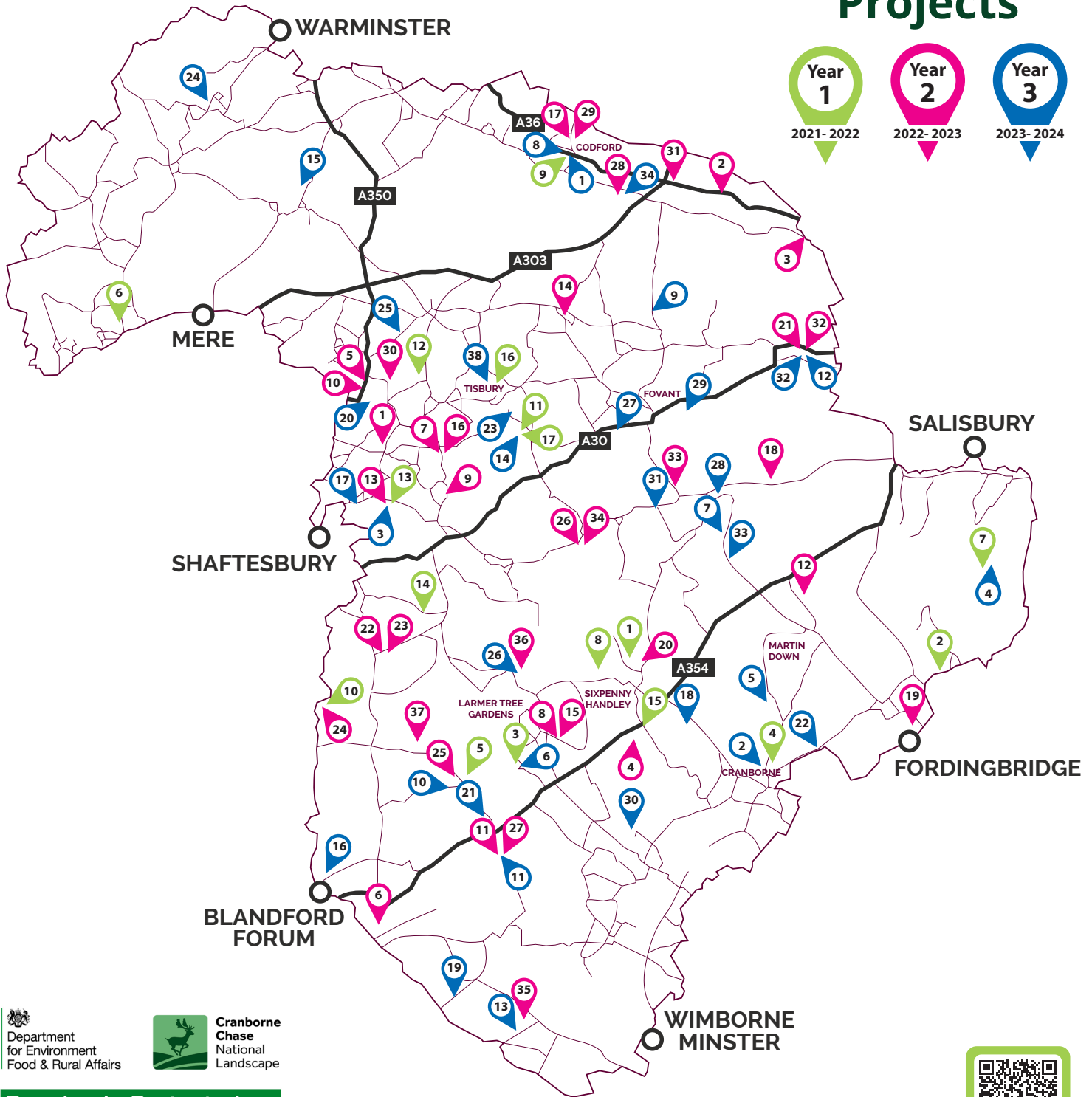




FARMING IN PROTECTED LANDSCAPES

Projects



Farming in Protected Landscapes programme



Farming in Protected Landscapes is a Defra funded programme running until March 2025 to provide support to land managers in AONBs and National Parks across England. Projects are supporting nature's recovery, mitigating the impacts of climate change, providing opportunities for people to discover, enjoy and understand the landscape and its cultural heritage, and protecting the quality and character of this special landscape.



FARMING IN PROTECTED LANDSCAPES



Projects

- 1 Large-scale bat survey in the Wylve Valley to identify species, the land and areas used for nesting, roosting and feeding.
- 2 Planting 325 trees with protection from deer and cattle. Coppicing bank side trees along the River Crane, and using site-won material to create woody berms.
- 3 Purchase of 16 NoFence collars to control and manage cattle grazing.
- 4 Provision of signage along public footpath. Sheep netting, canes and spirals to protect newly planted hedgerow.
- 5 Purchase of mobile sawmill to be used on farms across the Cranborne Chase.
- 6 Setting up 3 female new entrants to farming. Creation of a built for purpose chicken tractor, silvopasture, woodland and copice restoration.
- 7 The project aims to restore a 605 metre length of the Chalke Valley Stream and 0.88ha of adjoining floodplain (former watercress beds and fish farm).
- 8 Water quality testing at a variety of locations along the River Wylve for nitrate and phosphate levels.
- 9 Restoration of a neglected dew pond. Create permissive access route into pond area, install bench and interpretation panel.
- 10 Planting wildflower meadows - 896m² in front of Arthurs Barn and 495m² at top of the field, plus 20 metres of hedge planting and 12 mixed fruit trees.
- 11 Two educational visits for 30 service users of the dementia charity 'Mindful Café' and their carers to Launceston Farm.
- 12 Provision of a compost turner. Kissing gates to provide better access on the farms public footpaths.
- 13 This project planted 18ha with a locally sourced wildflower seed mix to improve biodiversity and manage nutrients.
- 14 Creation of a new 15m x 7m wildlife pond to ensure a mosaic of habitats.
- 15 Conversion of an all arable farm to a mixed holding grazing with c.200 replacement dairy heifers.
- 16 Generation of 2ha of new woodland to enrich existing organic farm habitat, as well as management of existing woodlands using traditional horse logging.
- 17 Renovation of old milking parlour to provide reception room, wash and toilet facilities for educational farm visits.
- 18 This project consolidated knowledge of Tree Sparrows within the National Landscape - and implemented actions such as wild bird plots and supplementary feeding.
- 19 Fencing 100ha to create a single unit for extensive grazing.
- 20 To erect fencing either side of 6 tree lanes of agroforestry planting. Providing protection for the trees generally, as well as from deer.
- 21 Habitat creation including 320m of hedgelaying, 4 wildlife boxes, swift boxes, 41m sheep and 41m rabbit fencing.
- 22 400 trees along wildflower strips with arable crops grown in between. The project will also include an area for a community orchard.
- 23 Pond restoration to provide shallower sides. Restoring the pond will increase insect abundance - essential for many farmland birds.
- 24 Survey of Longleat Estate to establish current distribution of beavers.
- 25 Restore pond in woodland, which is currently choked owing to fallen trees and leaf litter.
- 26 Survey to understand if there is a direct relationship between the frequency of potential bat roost features.
- 27 Water quality testing on River Nadder and Sem, for nitrate and phosphate levels.
- 28 Water quality testing in the River Ebbel for nitrate and phosphate levels.
- 29 Reinstatement pond for habitat creation and water management.
- 30 Planting 70 disease resistant elm trees in the Inner Chase project area.
- 31 Planting 100 disease resistant elm trees in the Chalke Valley Farmer Cluster area.
- 32 Planting 100 disease resistant elm trees in the Wilton Farmer Cluster area.
- 33 Bespoke accessible Bailey trailer, to facilitate farm tours for visitors from a broad range of backgrounds.
- 34 To identify and map any remaining specimens of rare indigenous Black Poplar (*Populus nigra betulifolia*) in the Wylve and Nadder valleys.

© Jamie Randall

 Department for Environment Food & Rural Affairs

 Cranborne Chase National Landscape

Farming in Protected Landscapes programme

Farming in Protected Landscapes is a Defra funded programme running until March 2025 to provide support to land managers in AONBs and National Parks across England. Projects are supporting nature's recovery, mitigating the impacts of climate change, providing opportunities for people to discover, enjoy and understand the landscape and its cultural heritage, and protecting the quality and character of this special landscape.